



71 Hadrian Way, Staines-Upon-Thames, TW19 7HE

£220,000

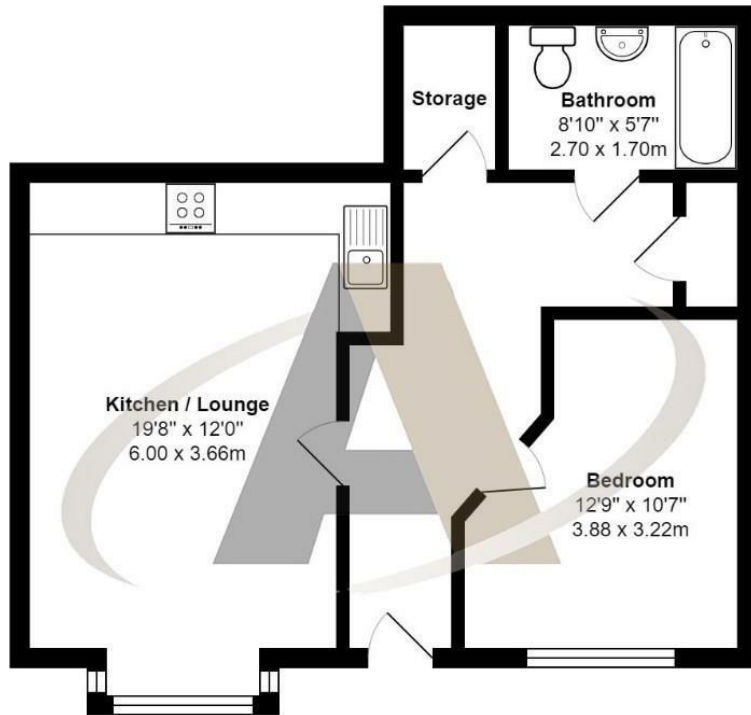
## 71 Hadrian Way, Staines-Upon-Thames, TW19 7HE

This immaculately presented and larger-than-average modern one-bedroom ground floor apartment enjoys the rare benefit of its own private front door and is set within a highly sought-after residential road, conveniently positioned for easy access to local shops and amenities. Forming part of a small, select development built by a renowned local housebuilder, the property offers well-planned, modern accommodation ideal for first-time buyers, downsizers, or investors alike.

The apartment features a high-quality fitted kitchen and stylish bathroom, along with a particularly spacious and unique entrance hall complete with two generous storage cupboards — a standout feature rarely found in similar homes. Further benefits include allocated parking, a long lease of over 116 years, and the significant advantage of being offered for sale with no onward chain, allowing for a smooth and straightforward purchase. Call Alex White and his market leading sales team at Aspen estate agents.



# Floor Plan



## Hadrian Way, Stanwell

Total Area: 585 ft<sup>2</sup> ... 54.3 m<sup>2</sup>

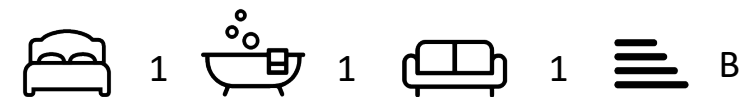
All measurements are approximate and for display purposes only



### Features

- Allocated Parking
- Ground Floor
- Popular Location
- Modern development
- Close To Shops
- Large Reception Room
- Modern Kitchen & Bathroom
- Good Size Apartment
- Viewing Advised
- 116 Year Lease

Aspen Residential Services  
77 Church Road, Ashford, Surrey, TW15 2PE  
Tel: 01784 252 202  
Email: enquiries@aspensalesandlettings.com



Tenure - Leasehold Council Tax Band -

